



Portable Banner Stands

SYMBOLS USED



premium product



product can be recycled
(does not include graphic
application)



product is made in the U.S.



affordable product



new addition



economy product



product comes with a carry
bag or case

WARRANTY KEY:



lifetime warranty
(hardware)



5 year warranty
(hardware)



1 year warranty
(hardware)



ORCHID

33.5"
WIDE

ORCHID



- quick to assemble and easy to use
- bamboo base, rail and pole are a sustainable choice
- slide graphic rail
- includes carry bag





IMAGINE

31.5" WIDE IMG

- variable height= 29.5"- 83.35"
- graphic tensioner
- anti-slip strips along base
- integrated pole storage
- telescopic pole
- interchangeable graphic cassette



BARRACUDA

31.5" WIDE BCD

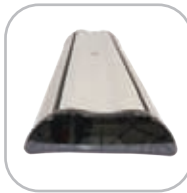
- variable height= 29.5"- 83.35"
- graphic tensioner
- integrated pole storage
- telescopic pole



EXCALIBUR

31.5" WIDE EXC

- variable height= 29.5"- 83.35"
- double sided
- graphic tensioner
- integrated pole storage
- telescopic pole



ADVANCE

31.5" WIDE ADV

- variable height= 29.5"- 83.35"
- double sided
- graphic tensioner
- anti-slip strips along base
- integrated pole storage
- interchangeable graphic cassette
- telescopic pole





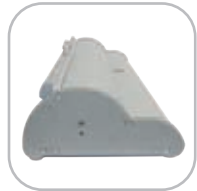
ORIENT

31.5" WIDE silver: ONT-800-S
black: ONT-800-B

35.5" WIDE silver: ONT-920-S
black: ONT-920-B

39.25" WIDE silver: ONT-1000-S
black: ONT-1000-B

- standard height= 83.25"
- anodized silver or black
- molded end plates
- 3-piece bungee corded pole



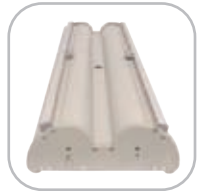
ORIENT 2

31.5" WIDE silver: ONT-800-DBL-S
black: ONT-800-DBL-B

35.5" WIDE silver: ONT-920-DBL-S
black: ONT-920-DBL-B

39.25" WIDE silver: ONT-1000-DBL-S
black: ONT-1000-DBL-B

- standard height= 83.25"
- double-sided
- anodized silver or black
- molded end plates
- 3-piece bungee corded pole



BLADE LX

33.5" WIDE BLD-LX-GRY

- standard height= 83.25"
- features a gunmetal anodized body & cast chrome end plates
- roller access via flip-top lid & removable self-locking graphic roller mechanism
- quick change graphic slider
- adjustable feet on base are useful on uneven floors
- 3-piece bungee corded pole & premium top rail



CONTENDER

23.5" WIDE silver: CN-24-S
black: CN-24-B

29.5" WIDE silver: CN-30-S
black: CN-30-B

35.5" WIDE silver: CN-36-S
black: CN-36-B

47.5" WIDE black: CN-48-B

- standard height= 77.5" or 105" high with optional 4th pole
- swivel-out foot
- powder coated silver or black finish
- laser cut steel ends & swaged pole
- made in the U.S.A.





ELEVATE

31.5" WIDE ELEVATE **NEW**

- over 8' tall
- telescopic pole (4 piece)
- roller access via flip-top lid and removable self-locking graphic roller mechanism
- variable height 32" – 96"
- black aluminum body with chrome endcaps





PACIFIC

31.5" WIDE PAC-800-S

35.5" WIDE PAC-920-S

39.25" WIDE PAC-1000-S

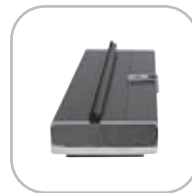
- standard height= 83.75"
- anodized silver
- molded end plates
- swivel-out foot
- 3-piece bungee corded pole



BLOK

33.5" WIDE BLOK **NEW**

- attractive black base with chrome endcaps
- includes carry bag
- bungee pole
- quick and easy to assemble





LIGHTNING

31" WIDE LTNG

- standard height= 77"
- snap-lock graphic rails
- 3-piece bungee corded pole



DASH LITERATURE POCKET

31.5" WIDE DSH-M-LR

- recommended graphic height= 44"
- separate 3 pocket literature dispenser option to attach to a Dash unit



DASH MEGA 1 & 2

36" WIDE single sided: DSH-ME double sided: DSH-ME-2

- variable height= up to 93.5"
- stable, anodized aluminum
- quick & easy to erect



DASH 1 & 2

31.5" WIDE single sided: DSH-M-1 double sided: DSH-M-2

- variable height= up to 78.5"
- stable, anodized aluminum
- quick & easy to erect



PEGASUS

52.5"-95" WIDE silver: PGSUS-S black: PGSUS-B

PEGASUS MINI

27.5"-48" WIDE silver: PGSUS-MIN-S black: PGSUS-MIN-B

- both feature variable height= 36.5"- 96"
- backwall or backdrop
- single or double sided
- dual telescopic poles



UNO

31.5" WIDE UN-I-ST

36" WIDE UN-I-MG

48" WIDE UN-I-MO

- variable height= 35"- 85.5"
- powder coated black weighted base



BLIZZARD

BLZD

- adjustable width= up to 40"
- adjustable height= up to 80"
- base can be filled with water or sand
- easy grommet graphic attachment



MONSOON

MONSN-2



- semi-portable single or double sided billboard
- strong frame is quick & easy to assemble
- includes ground stakes & bungee rope
- banner & grommets not included



ROCKET



- 3 legs can be filled with water or sand
- single or double sided
- spring-loaded graphic support 1/8" coroplast plastic or similar substrate recommended
- ideal for contour cut custom graphics
- graphic size may vary



ZOOM



- can be used indoors or out
- graphic rotates in wind
- water fillable donut adds stability
- graphic printed on flag material
- double sided graphic is available
- both floor base & ground stake included (additional base options available, see page 10)
- additional sizes & shapes available on page 10

BRUTE

BRUTE



- use one to hold a smaller graphic, or as many as you need to hold a large graphic
- secure grip allows for use outdoors in the elements as well as inside
- quick set-up, easy storage
- fill with water or sand, 100% empties after use
- works with a variety of graphic substrates



contoured base sits stable on uneven terrain



recommended width: 1 Brute per 4' of signage

WHIRLWIND

WHRL-WND



- front-loading snap frames constructed from aluminum & powder-coated steel
- single or double sided
- includes clear lens cover
- quick & easy graphic changes
- dual-spring design flexes to withstand wind gusts
- compact durable base can be filled with water or sand for extra stability
- integrated wheel set

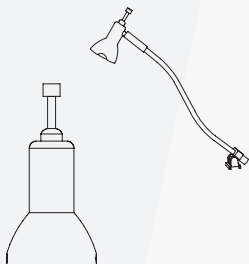




LUMINA 1

silk black: LUM-1-B
chrome: LUM-1-C

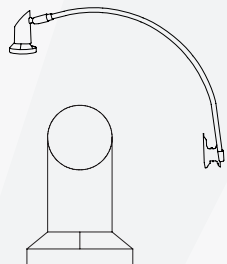
- low voltage 50 watt spotlight
- "goose neck" arm
- mounts horizontally



LUMINA 2

LUM-2

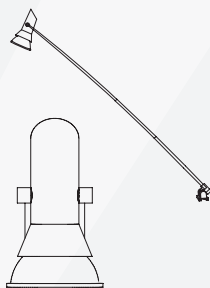
- low voltage 35 watt slender spotlight
- mounts to a vertical pole
- brushed stainless steel finish



LUMINA 3

LUM-3

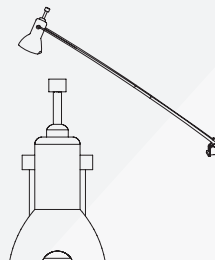
- low voltage 50 watt
- spotlight, chrome with a black head
- telescopic arm
- extends from 7"-22" long



LUMINA 5

LUM-5

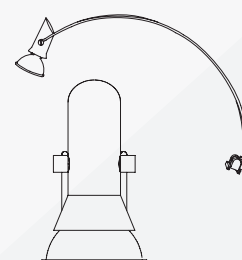
- low voltage 50 watt spotlight
- deluxe chrome head
- telescopic arm
- extends from 7"-22" long



LUMINA 6

LUM-6

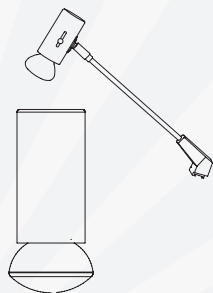
- low voltage, 50 watt spotlight
- stylish curved twin arms
- silk black only



LUMINA 7

LUM-7

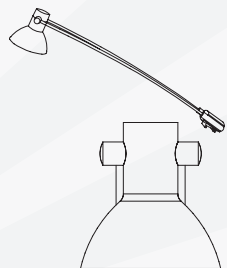
- incandescent 110 volt fixture
- dovetail mount
- 45 watt incandescent bulb included
- silk black only



LUMINA 8

silk black: LUM-8-B
painted silver: LUM-8-C

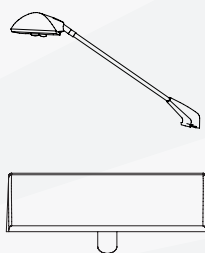
- 12 volt spotlight with straight arm & adjustable head
- includes 110 volt UL approved transformer, 50 watt bulb & universal fittings kit
- 17" (431.8 mm) long from end to end



LUMINA 200

LUM-200 ORL

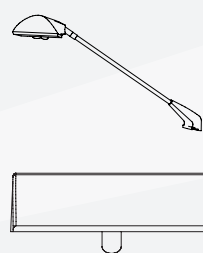
- 110 volt ETL approved wall washer floodlight with a straight arm & adjustable head
- light includes 200 watt halogen bulb
- 19.5" (495.3 mm) long from end to end
- silk black finish



LUMINA 200 LED

LUM-LED-ORL-B

- LED version of the Lumina 200 floodlight
- 1400 Ma, 12VDC
- LED rated for 20,000 continuous hours



LUMINA SPARE BULB KIT

LUM-BULB
- (2) 50 watt low voltage spare bulbs in a padded, protective EVA formed case



UNIVERSAL LIGHT CLAMP KIT

UNI-LT-CLP
- comes standard with the Lumina 1, 3, 4, 5, 6, 8, 9, 10, 11, 12, 13 and allows our lights to fit a majority of banners, truss & panel kits

LED BULB OPTION

MR11: LUM-LV-LED-BLB11
- a green solution for Lumina 2
- 3 watt LED bulb

MR16: LUM-LV-LED-BLB16
- a green solution for Lumina 1, 3, 4, 5, 6, 8, 10, 11, 12, & 13
- 5 watt LED bulb



MR11

MR16



All our lighting options come with a one year warranty.